

*Managing private forests for birds:
a Wisconsin perspective*

Mike Mossman, WDNR Bureau of Science Services

AN OUTLINE FOR MANAGING YOUR LAND.

- ❑ What do I have?
- ❑ What could I have?
- ❑ What is the context?
- ❑ What do I want?
- ❑ Plan.
- ❑ Manage.
- ❑ Monitor.
- ❑ Adjust.

WHERE TO FIND HELP.

- County DNR forester.
- Private consultants.
- NRCS/EQIP.
- DNR/LIP.
- DNR/MFL.
- Online sources.
- Other landowners, volunteers.
- Land trusts.

WHAT DO I HAVE ?

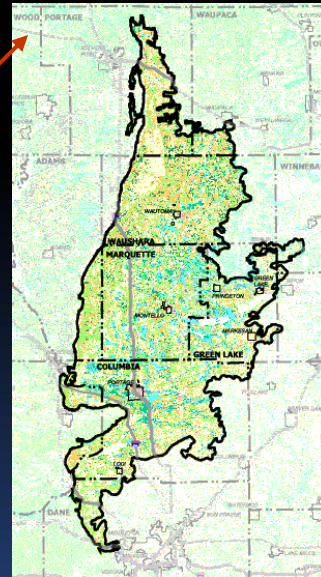
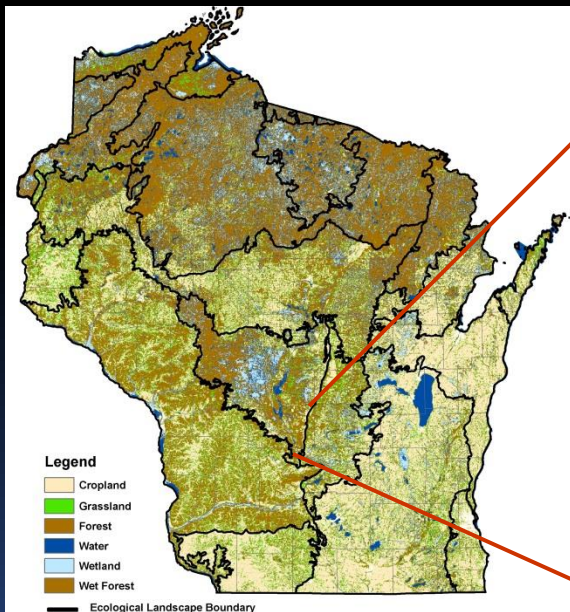
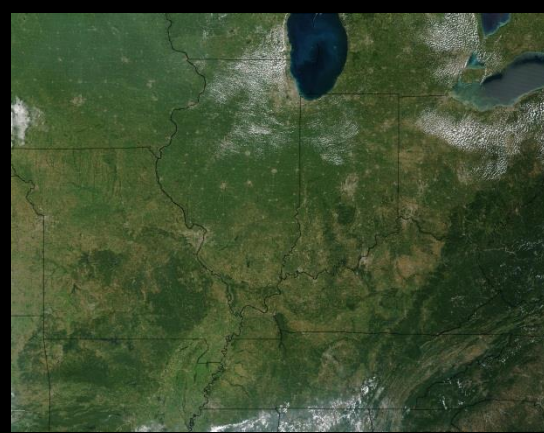
- ❑ Habitats, forest types.
- ❑ History, succession.
- ❑ Invasives, disease, threats.
- ❑ Birds.
- ❑ Other flora and fauna.

WHAT COULD I HAVE ?

- ❑ Consider management options.
- ❑ Consider your needs.
- ❑ Habitats, forest types.
- ❑ Succession, threats.
- ❑ Effects on birds, flora, fauna.

CONSIDER CONTEXT

- ❑ Think global, act local?
- ❑ Ecological Landscape (WWAP).
- ❑ Proximity to conservation areas.
- ❑ Local setting.
- ❑ Opportunities to help SGCN.



Make priorities
from the top down

WHAT DO I WANT ?

- ❑ Esthetics, economics, conservation.
- ❑ Short-term vs long-term goals.
- ❑ Birds.

PLAN

- ❑ Philosophy, goals, objectives.
- ❑ Short-term vs long-term.
- ❑ Dynamic.
- ❑ Map.

MANAGE

- ❑ Guided by plan, objectives.
- ❑ A process. Short- & long-term.
- ❑ Forestry techniques:
 - ❑ Single-tree & group selection.
 - ❑ Shelterwood.
 - ❑ Clearcut.
 - ❑ Fire.
 - ❑ Control invasives.
 - ❑ Reforestation/afforestation

MONITOR

- ❑ Forest condition, response.
- ❑ Short-term vs long-term.
- ❑ Vegetation surveys optional.
- ❑ Photo points.
- ❑ Bird survey.

ADJUST

- ❑ Dynamic, adaptive process.
- ❑ Philosophy, goals, objectives, management.
- ❑ Change with times, changing conditions, knowledge.
- ❑ Enjoy!