

A photograph of a forest wetland. In the foreground, a small stream flows through a dense thicket of green plants with bright yellow flowers. Several large, moss-covered logs are scattered across the scene, some partially submerged in the water. The background is filled with tall, thin, bare trees, suggesting a late autumn or winter setting. The overall atmosphere is quiet and natural.

Private Wetlands and Birds

Tracy Hames

Wisconsin Wetlands Association

March 20, 2015

Wisconsin Wetlands Association

- Non-profit
- Non-governmental
- Non-partisan
- Membership based
- Statewide
- Dedicated to the protection, restoration, and enjoyment of wetlands
- Science-based outreach & education

Wisconsin Wetlands Association

We help people and communities
care for wetlands

Wisconsin Wetland Loss

- Wisconsin has lost nearly HALF of its original 10 million acres of wetlands
- Much of the remaining wetlands are altered and degraded

Private Landowner Outreach

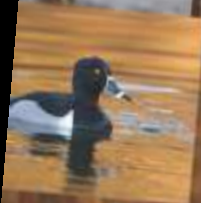
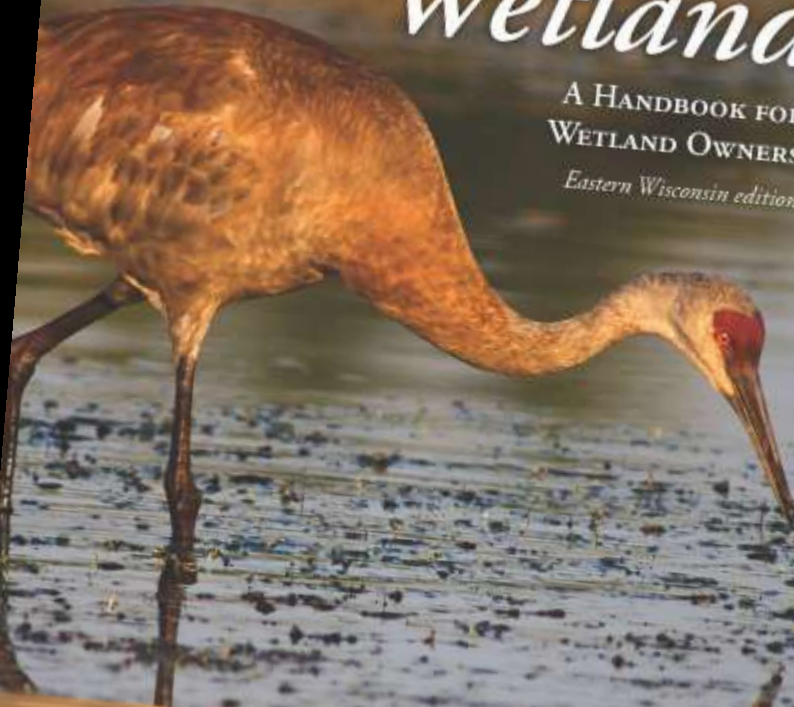
- **75% of Wisconsin's wetlands are in private ownership**
- **As much as 85% of Wisconsin's potentially restorable wetlands are in private ownership**



My Healthy Wetland

A HANDBOOK FOR
WETLAND OWNERS

Eastern Wisconsin edition



*A publication of Wisconsin Wetlands Association
and the Aldo Leopold Foundation*

A photograph of a deer with small antlers eating grass in a wetland. The deer is the central focus, shown in profile from the chest up, facing left. It has a reddish-brown coat and is actively chewing on a piece of green grass. The background is a dense field of tall, green grasses, slightly out of focus. The overall scene is a natural, outdoor setting.

What Are Wetlands?

Marsh



Yellow-headed Blackbird



Virginia Rail



Trumpeter Swan



Blue-winged Teal



(C) 2005, Scott Franke

Black Tern



Brian Hansen

Open Bog



Coniferous (spruce) Bog



Palm Warbler



Winter Wren



(C) 2006, Scott Franke

Golden-crowned Kinglet



Floodplain Forest



Bufflehead



(C) 2008, Scott Franke

Black-crowned Night Heron



Prothonotary Warbler



Kentucky Warbler



(C) 2008, Scott Franke

Alder Thicket



Veery



Alder Flycatcher



Shrub Carr



Yellow Warbler



Willow Flycatcher



Common Yellowthroat



Lowland Hardwood Swamp



Red-shouldered Hawk



Barred Owl



Blue-Gray Gnatcatcher



Fen



Sedge Meadow



American Bittern



Sedge Wren



Northern Harrier



Cranes



Ephemeral Pond



Sandhill Cranes



Wood Duck



(c) dhFreriks
2010



What Good Are Wetlands?

Wetlands protect our communities from flooding



Wetlands protect water quality



Wetlands protect lakes, rivers, and streams



Wetlands provide wildlife habitat



Wetlands are great places for recreation



A man with white hair and glasses, wearing a blue and white plaid shirt and yellow work gloves, stands in a lush green wetland. He is holding a long wooden stake vertically. The background is filled with dense vegetation, including tall grasses and various trees and shrubs. The scene is brightly lit, suggesting a sunny day.

*Actions for a Healthy
Wetland*

Get your feet wet



Get Involved with Birds!





Care for it
and they will come.

Healthy water attracts wildlife

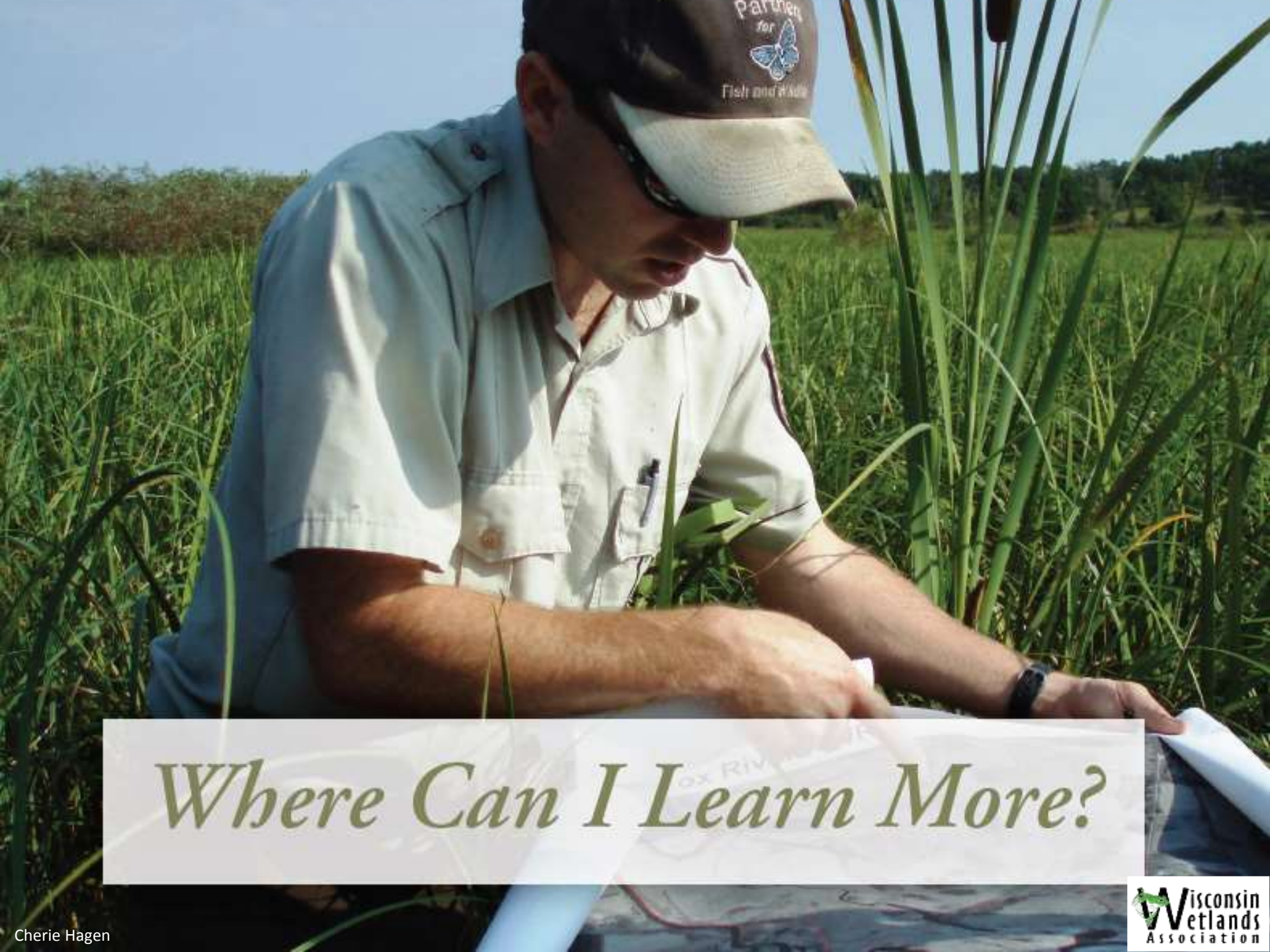


Diversity Matters



Don't Dig Here



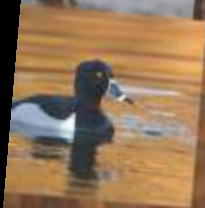
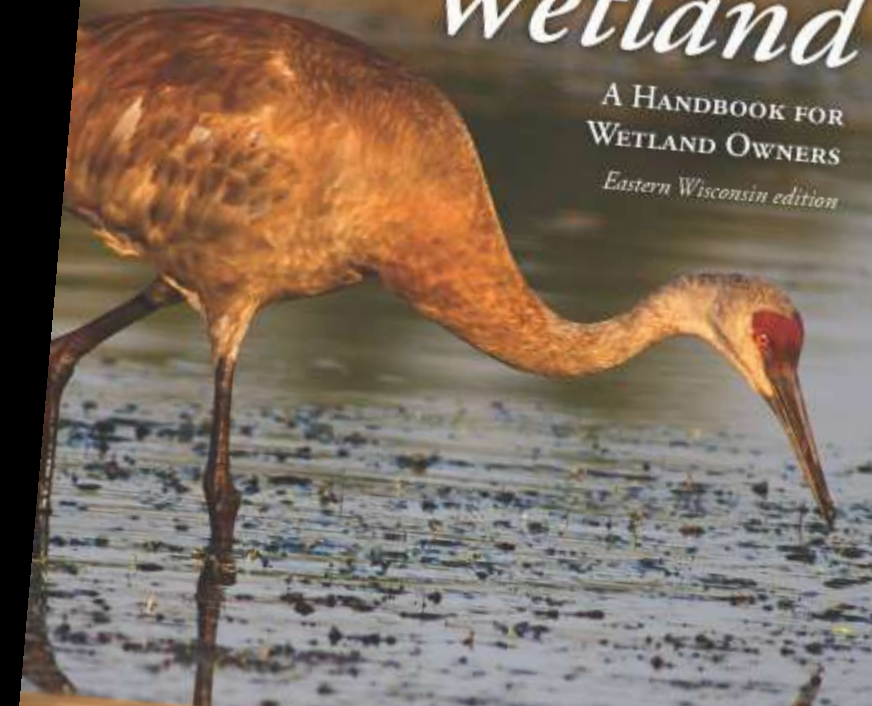


Where Can I Learn More?

My Healthy Wetland

A HANDBOOK FOR
WETLAND OWNERS

Eastern Wisconsin edition



*A publication of Wisconsin Wetlands Association
and the Aldo Leopold Foundation*

Only
\$10

Copies
available
here

Wetlands are solutions to our water issues!



Thank You!



Gary Shackelford